

LOTTO 8 - UNITA' A

PIANO TERRA

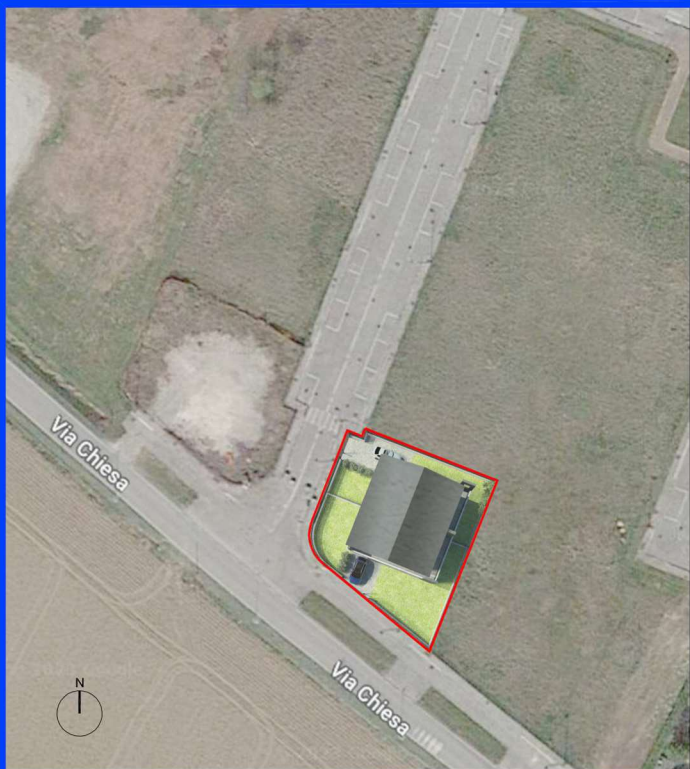
- ① INGR./SOGGIORNO 25.19 mq
- ② CUCINA 13.08 mq
- ③ BAGNO 5.05 mq
- ④ RIPOSTIGLIO 2.64 mq
- ⑤ GARAGE 18.55 mq

VERDE PRIVATO 115.73 mq
 AREA DI MANOVRA 50.31 mq

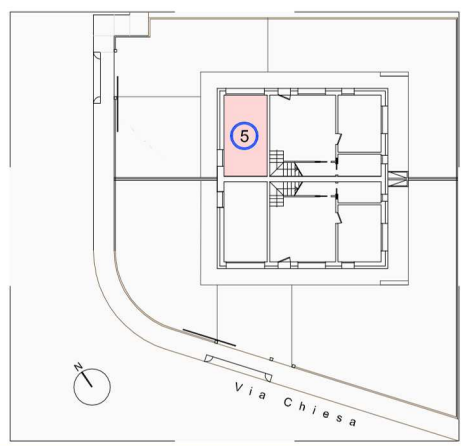
PIANO PRIMO

- ⑥ DISIMPEGNO 9.55 mq
- ⑦ CAMERA 1 20.20 mq
- ⑧ CAMERA 2 18.72 mq
- ⑨ CAMERA 3 10.18 mq
- ⑩ BAGNO 6.08 mq
- ⑪ TERRAZZA 1 11.66 mq
- ⑫ TERRAZZA 2 9.52 mq

SUPERFICIE COMMERCIALE 190.27 mq



LOCALIZZAZIONE UNITA'



**GALIAZZO FRATELLI
 COSTRUZIONI**