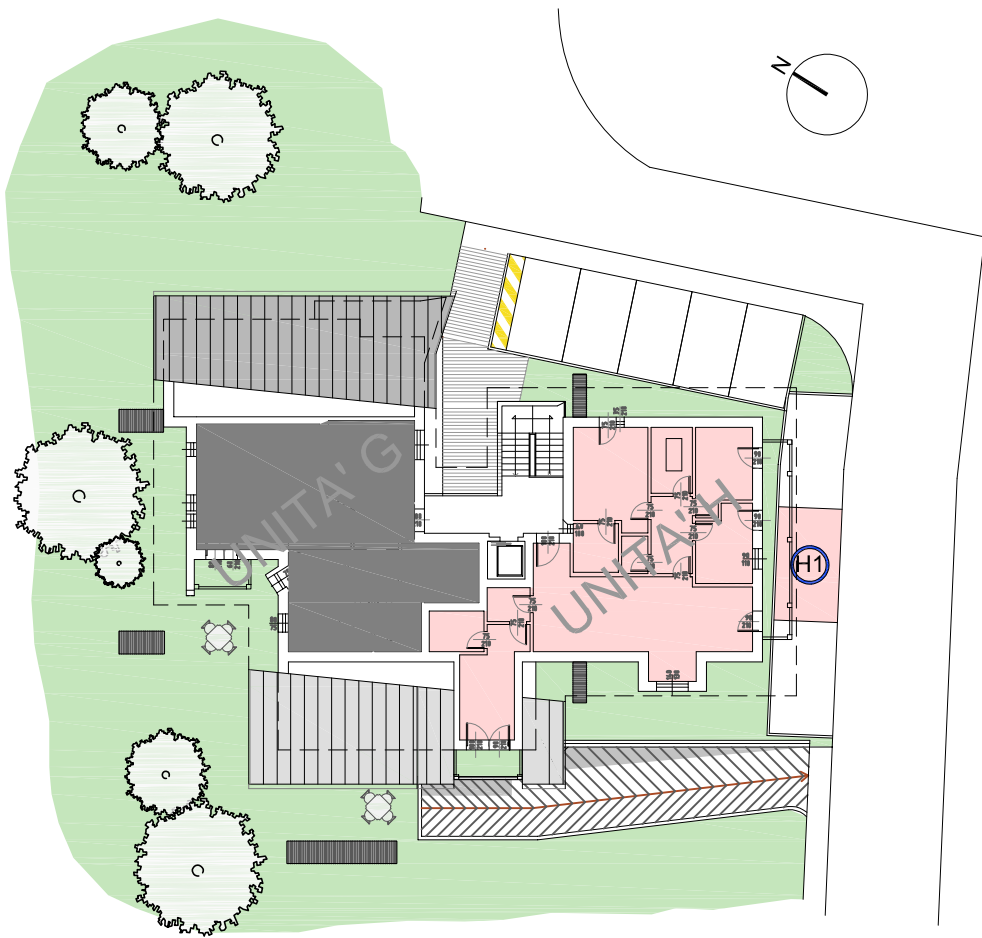


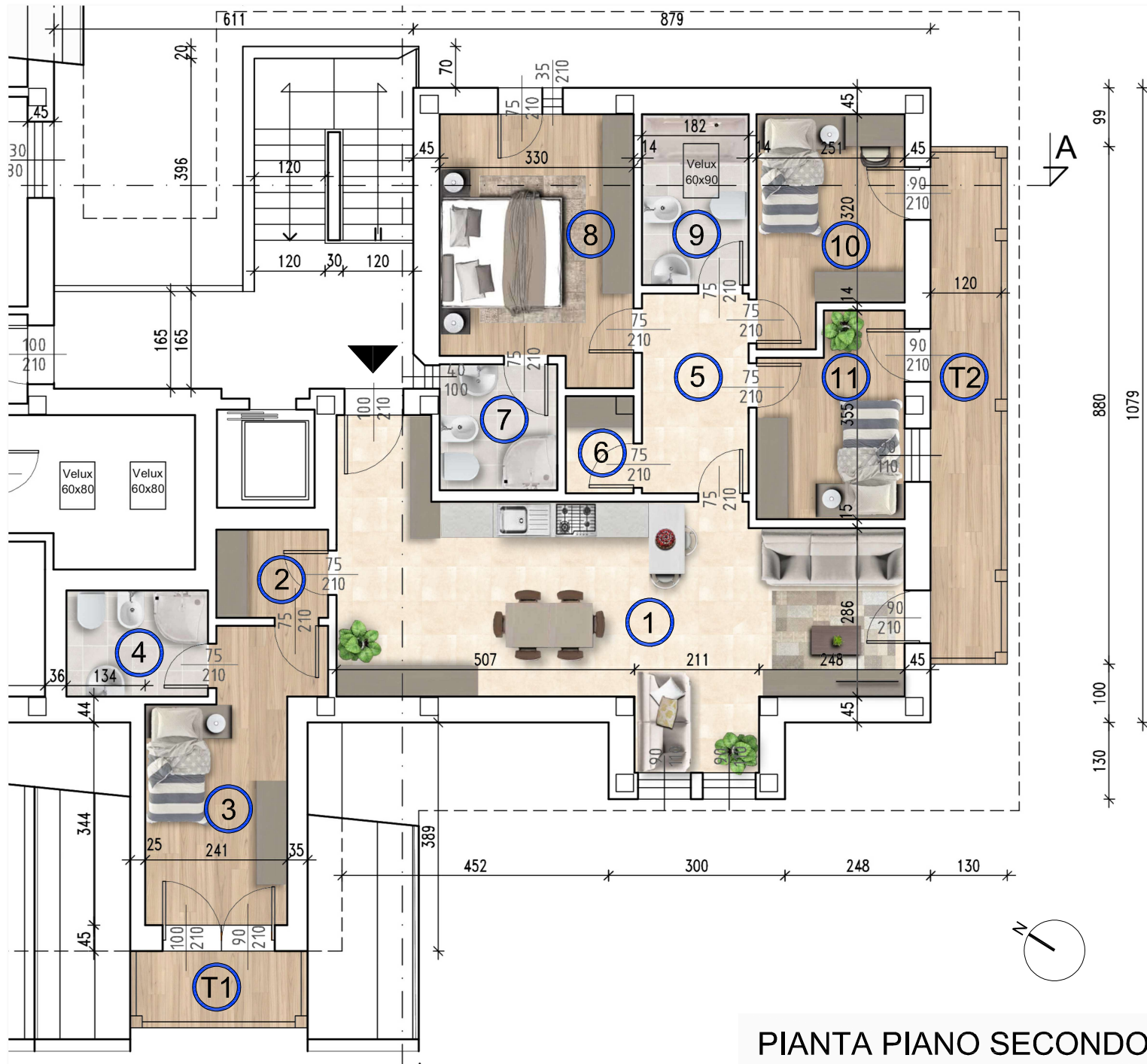
UNITA' H



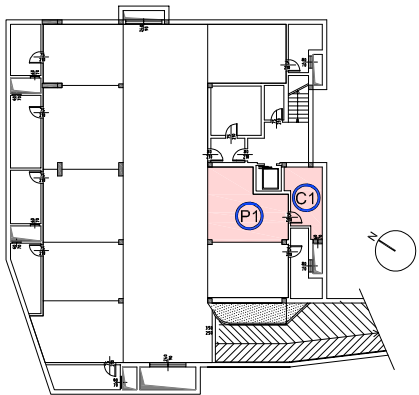
PLANIMETRIA

①	INGRESSO-CUCINA-SOGGIORNO	35.89 mq
②	DISIMPEGNO	2.84 mq
③	CAMERA 1 letto	11.49 mq
④	BAGNO	4.34 mq
⑤	DISIMPEGNO	6.17 mq
⑥	RIPOSTIGLIO	1.82 mq
⑦	BAGNO	4.30 mq
⑧	CAMERA 2 letti	14.18 mq
⑨	BAGNO	5.28 mq
⑩	CAMERA 1 letto	8.83 mq
⑪	CAMERA 1 letto	8.00 mq
T1	TERRAZZA	3.34 mq
T2	TERRAZZA	10.30 mq
C1	CANTINA	9.50 mq
P1	GARAGE	22.17 mq
H1	POSTO AUTO	14.00 mq

SUPERFICIE COMMERCIALE 170.69mq



PIANTA PIANO SECONDO



PIANO INTERRATO



**RESIDENZE
BOSCO VERDE**

Comune di Rocca Pietore (BL)



**GALIAZZO FRATELLI
COSTRUZIONI**