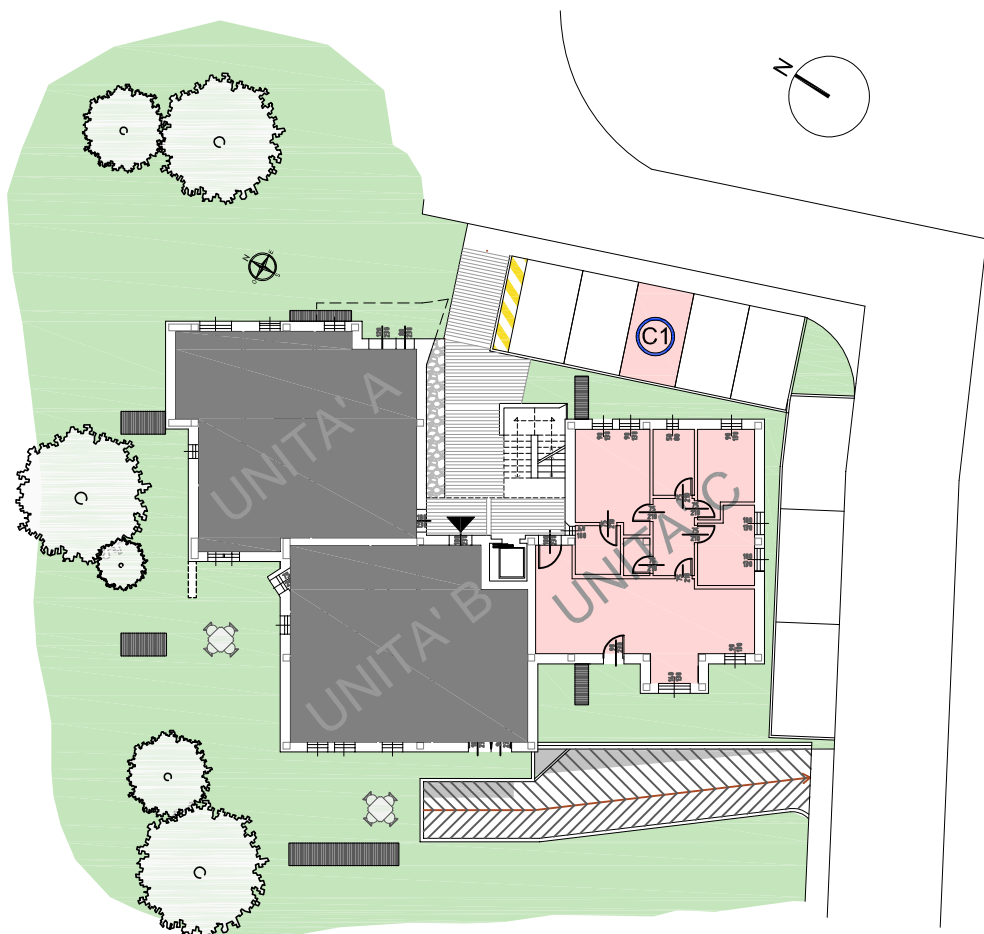


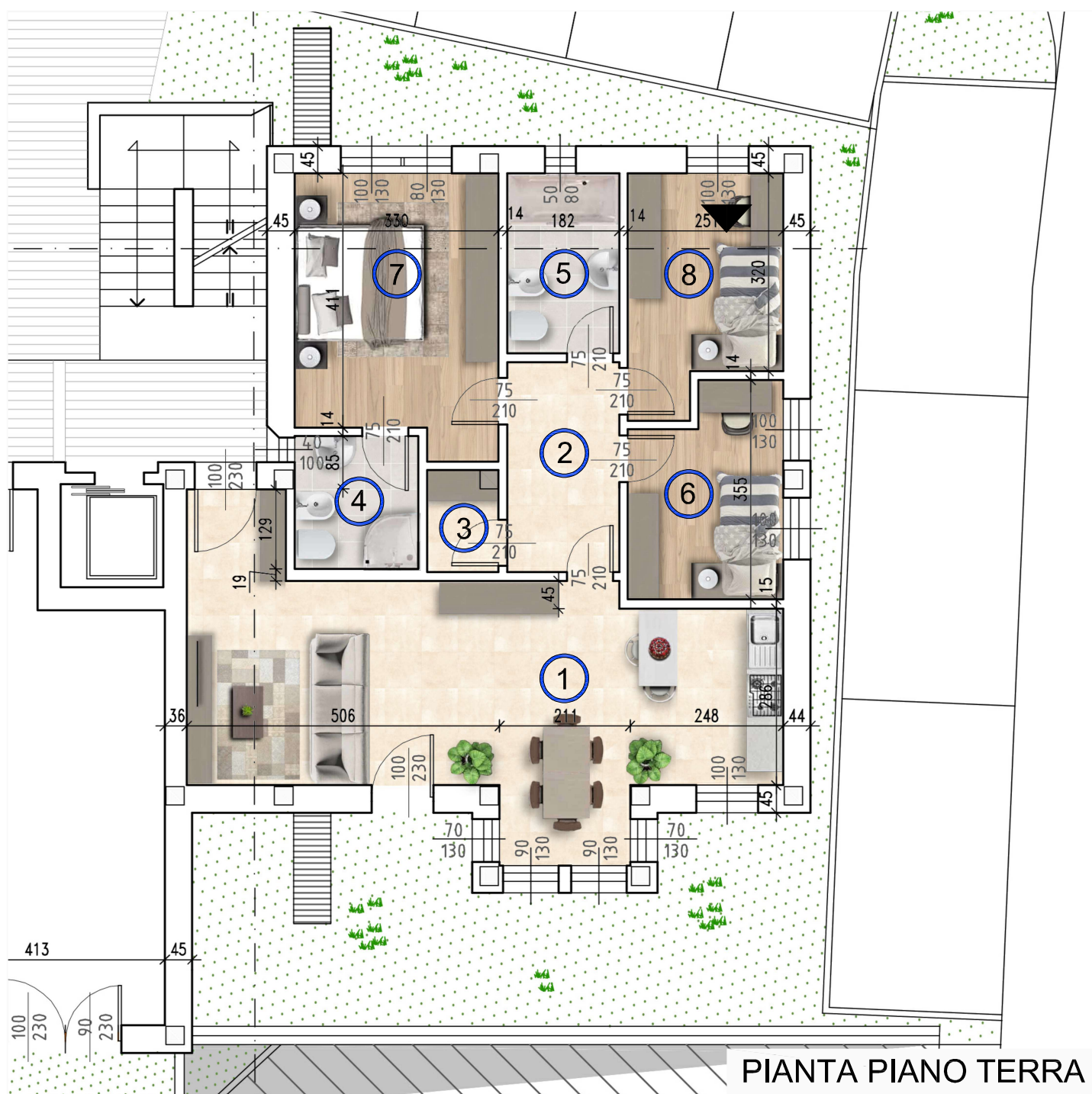
UNITA' C



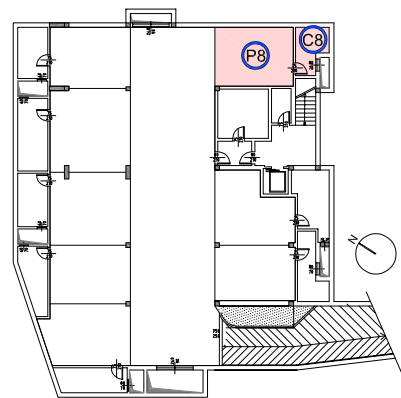
PLANIMETRIA

①	INGR./SOGGIORNO	35.84 mq
②	DISIMPEGNO	6.17 mq
③	RIPOSTIGLIO	1.82 mq
④	BAGNO	4.30 mq
⑤	BAGNO	5.28 mq
⑥	CAMERA 1 letto	8.00 mq
⑦	CAMERA 2 letti	14.18 mq
⑧	CAMERA 1 letto	8.83 mq
⑧	CANTINA	5.77 mq
P8	GARAGE	20.24 mq
C1	POSTO AUTO	10.50 mq
	AREA GIARDINO	53.50 mq

SUPERFICIE COMMERCIALE 152.39 mq



PIANTA PIANO TERRA



PIANO INTERRATO



RESIDENZE
BOSCO VERDE

Comune di Rocca Pietore (BL)



GALIAZZO FRATELLI
COSTRUZIONI