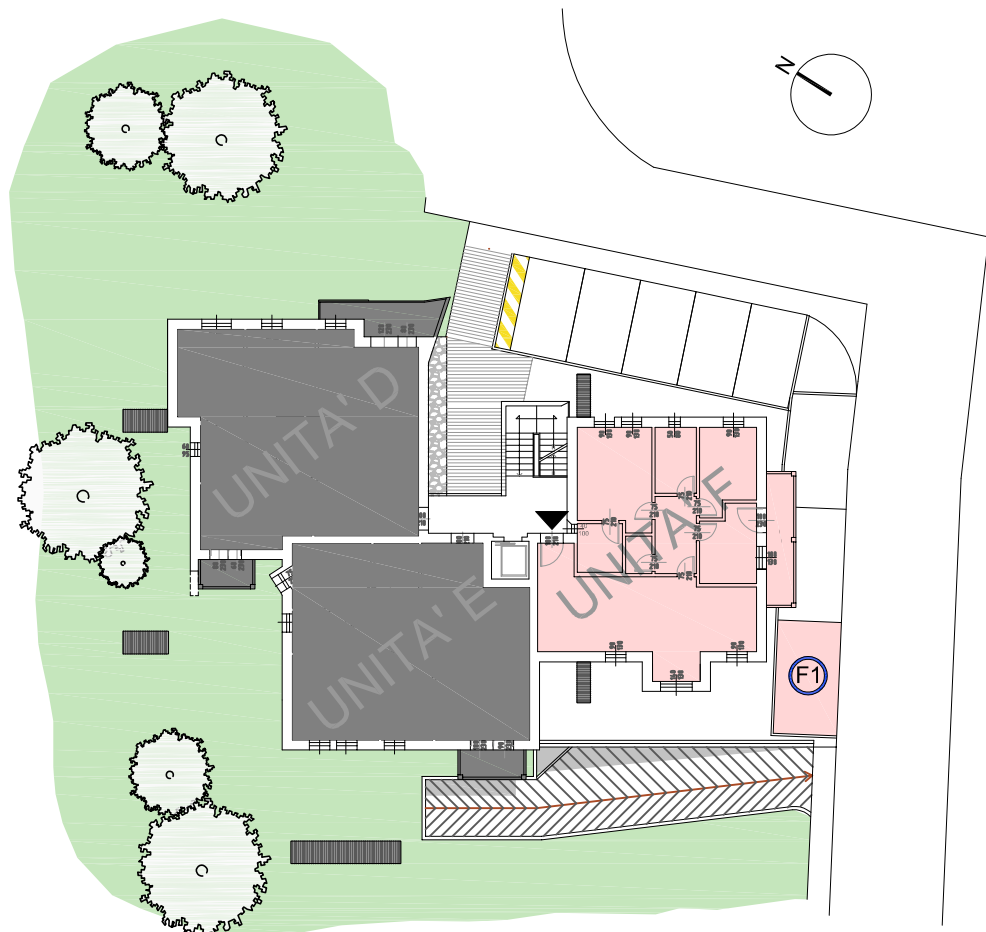


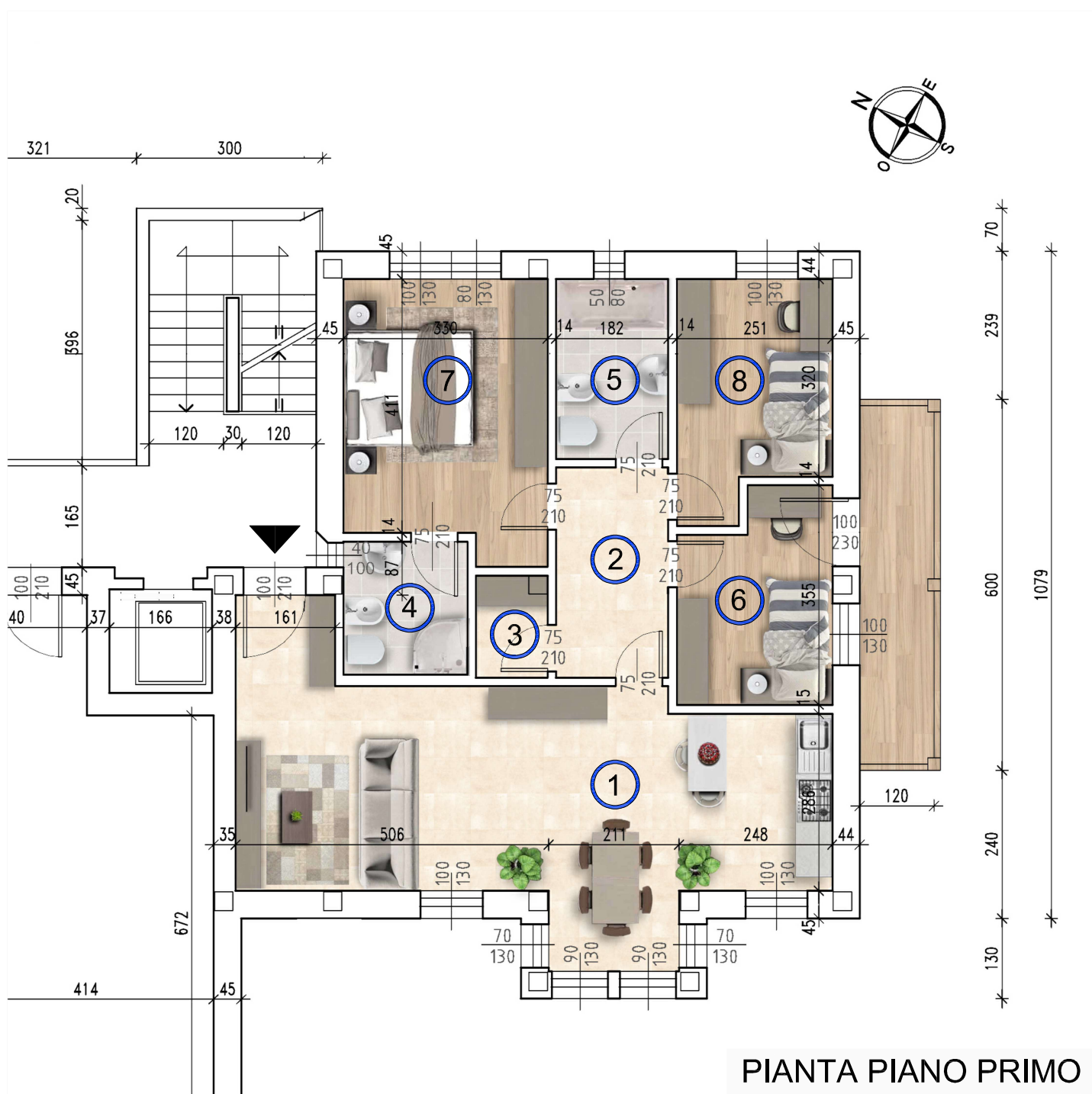
UNITA' F



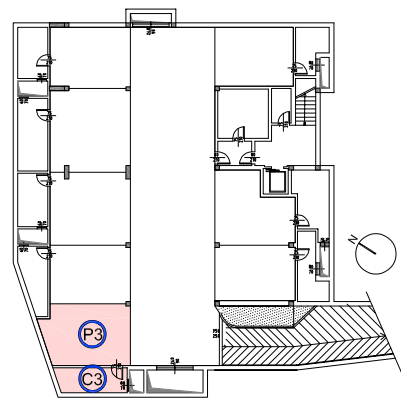
PLANIMETRIA

1	INGR./SOGGIORNO	35.84 mq
2	DISIMPEGNO	6.17 mq
3	RIPOSTIGLIO	1.82 mq
4	BAGNO	4.30 mq
5	BAGNO	5.28 mq
6	CAMERA 1 letto	8.00 mq
7	CAMERA 2 letti	14.18 mq
8	CAMERA 1 letto	8.83 mq
T1	TERRAZZA	6.96 mq
C3	CANTINA	7.65 mq
P3	GARAGE	22.81 mq
F1	POSTO AUTO	14.00 mq

SUPERFICIE COMMERCIALE 143.72 mq



PIANTA PIANO PRIMO



PIANO INTERRATO



RESIDENZE
BOSCO VERDE

Comune di Rocca Pietore (BL)



GALIAZZO FRATELLI
COSTRUZIONI