

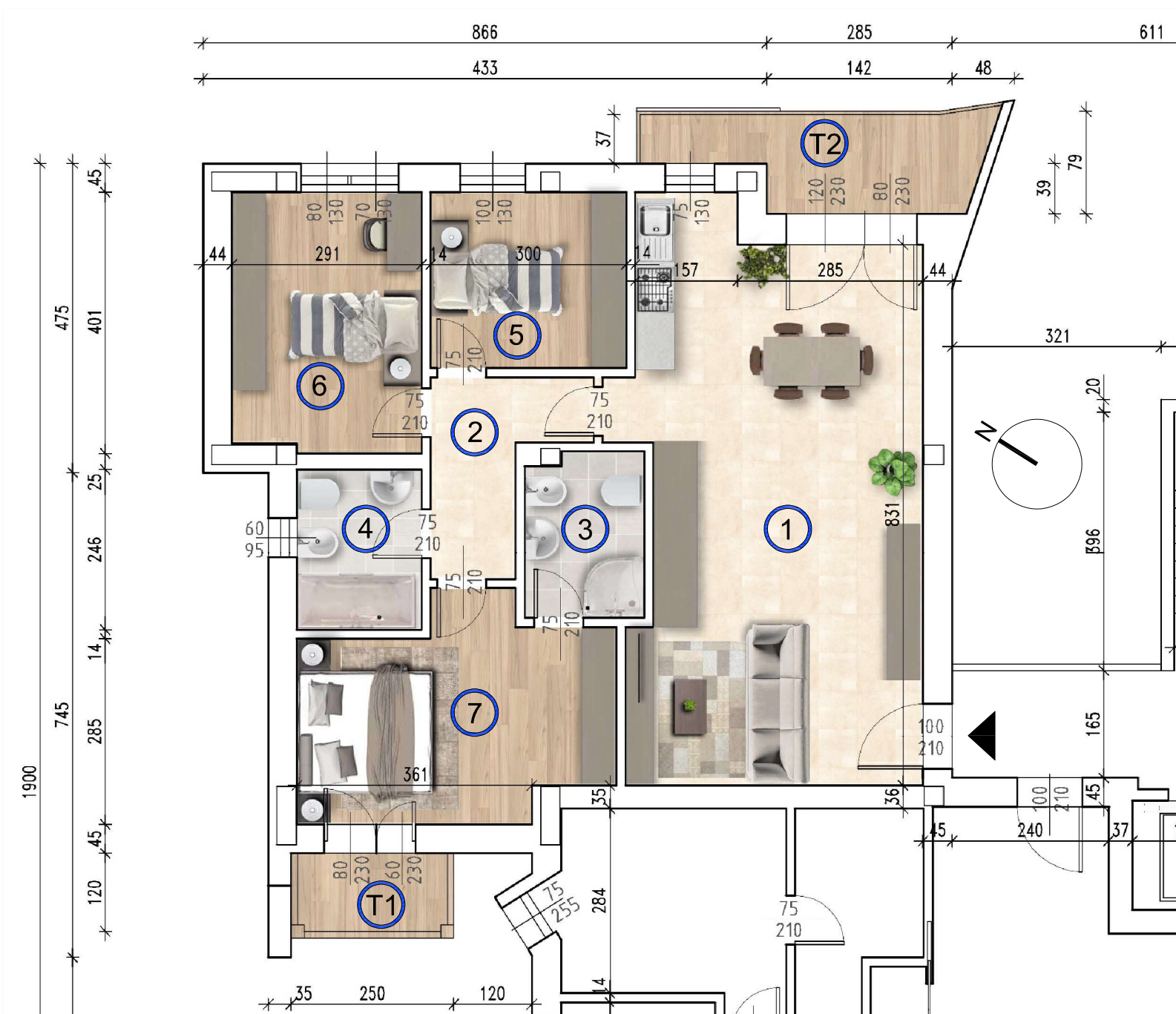
UNITA' D



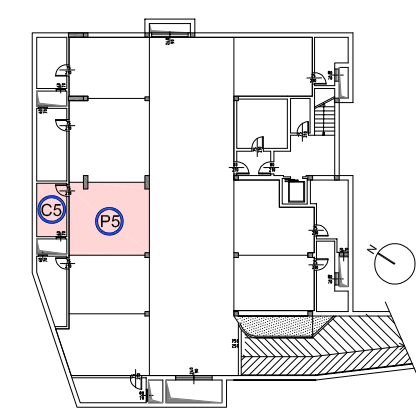
| | | |
|----|-----------------|----------|
| 1 | INGR./SOGGIORNO | 38.76 mq |
| 2 | DISIMPEGNO | 5.23 mq |
| 3 | BAGNO | 4.58 mq |
| 4 | BAGNO | 4.70 mq |
| 5 | CAMERA 1 letto | 8.10 mq |
| 6 | CAMERA 1 letto | 11.52 mq |
| 7 | CAMERA 2 letti | 14.48 mq |
| T1 | TERRAZZA | 2.74 mq |
| T2 | TERRAZZA | 6.59 mq |
| C5 | CANTINA | 7.04 mq |
| P5 | GARAGE | 25.23 mq |
| D1 | POSTO AUTO 1 | 10.50 mq |

PLANIMETRIA

SUPERFICIE COMMERCIALE 143.75 mq



PIANTA PIANO PRIMO



PIANO INTERRATO



RESIDENZE
BOSCO VERDE

Comune di Rocca Pietore (BL)



GALIAZZO FRATELLI
COSTRUZIONI